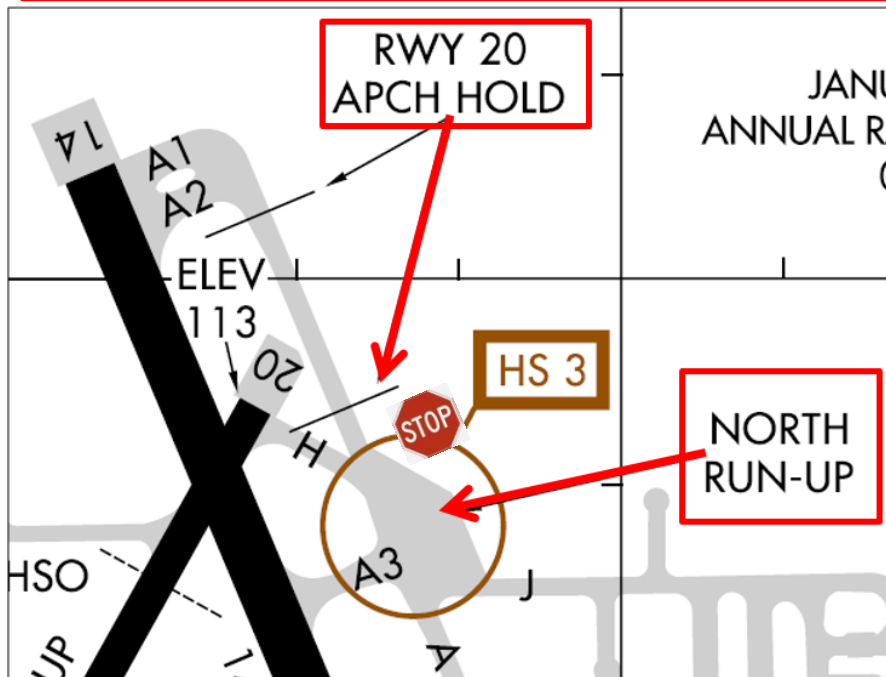


# AVOID A PILOT DEVIATION #1

**DO NOT CROSS THE  
20-APPROACH HOLD LINE  
WITHOUT TOWER CLEARANCE!**



**THERE IS NO RUN-UP AREA AT THE END OF RUNWAY 14!  
IF YOU ARE DEPARTING RUNWAY 14 AND NEED A RUNUP  
YOU WILL BE TOLD TO TAXI TO THE **NORTH RUN-UP** AREA**

# AVOID A PILOT DEVIATION #2

**WHEN CLEARED FOR TAKEOFF ON  
RUNWAY 20 DO NOT MISTAKENLY  
TAKEOFF ON RUNWAY 14!**

